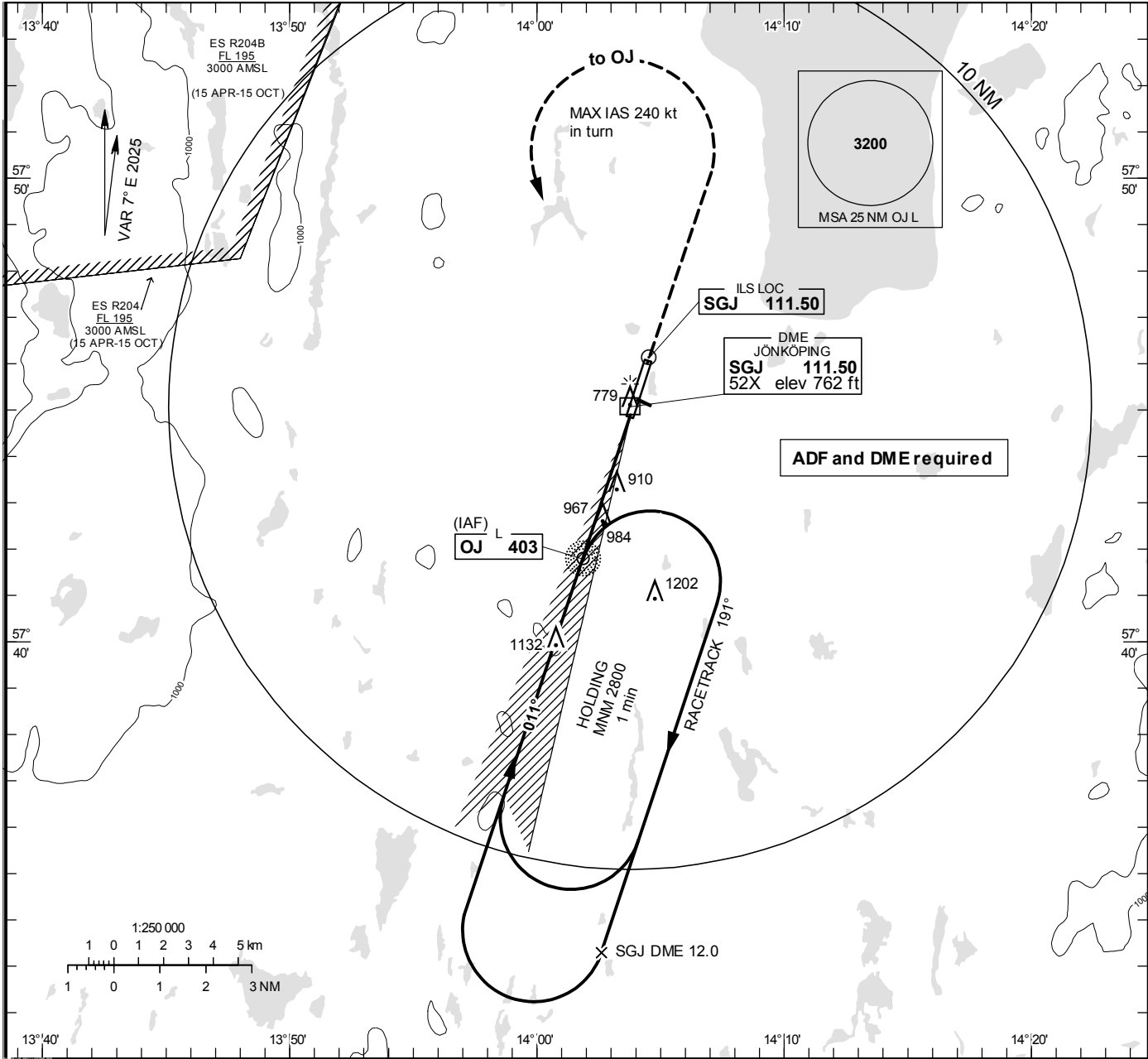


INSTRUMENT  
APPROACH  
CHART – ICAO

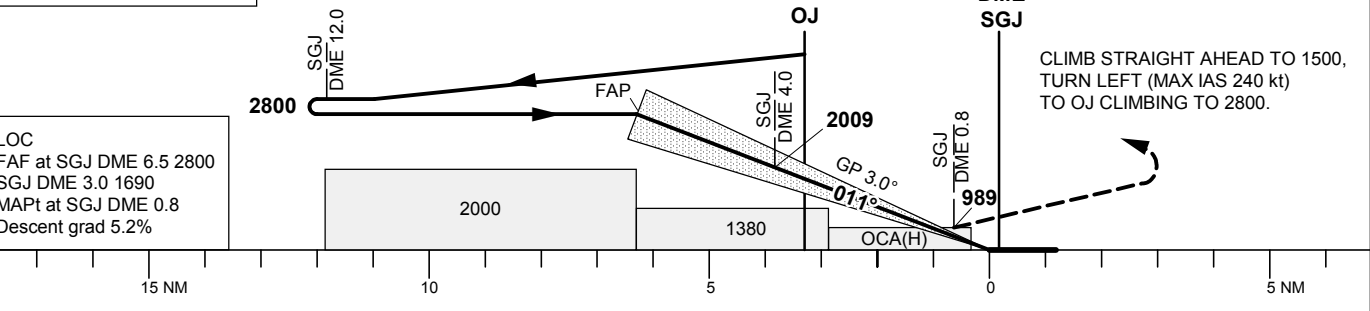
THR ELEV 734.3 ft, AD ELEV 742 ft  
OCH are related to THR.  
Circling OCH are related to AD ELEV.  
BRG are MAG  
ALT. HGT and ELEV in ft.

JÖNKÖPING TOWER 118.255



TA 5000 ft AMSL RDH 56.0 ft \*Timing not authorized for defining the MAPt

OM replaced by SGJ DME 4.0  
MM replaced by SGJ DME 0.8



OCA (H)					Final approach		LOC Distance FAF-MAPt 6.0 NM*				
Cat of ACFT	A	B	C	D	DME SGJ NM		6	5	4	3	2
Straight-in Approach	CAT I	876(141)	885(150)	896(161)	908(173)	ALT	2650	2330	2010	1690	1380
	LOC	1230(500)				GS	kt	80	100	120	140
						Time	min:s	4:30	3:36	3:00	2:34
Circling (MAX IAS 190 kt)					Rate of descent	ft/min	425	530	635	745	850

CHANGE: Editorial